

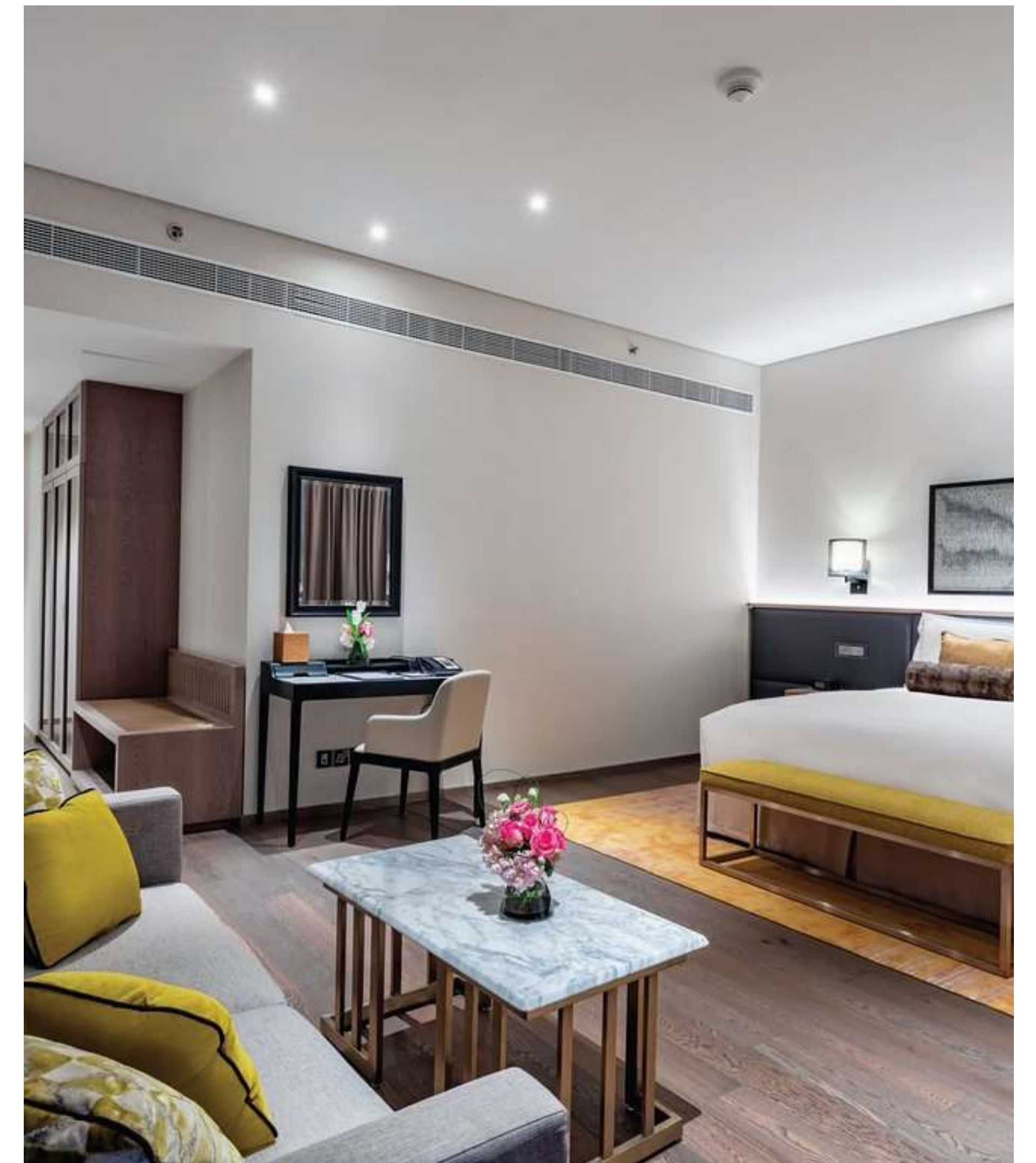


RF

RENOVATION FURNITURE TRADING LLC



ENGINEERED TIMBER EHF
MODERN, CLASSICAL & STYLISH
FLOOR, WALL & WINDOW TREATMENTS.



EHF – ENGINEERED HARDWOOD FLOORING

EHF is an engineered timber brand that provides a high-quality, parquet flooring for contemporary interiors. Nothing compares to the beauty of a natural wood flooring. The collections come equipped with a click or tongue & groove installation system and all products are carefully selected to be FSC certified.

EHF
ENGINEERED HARDWOOD FLOORING

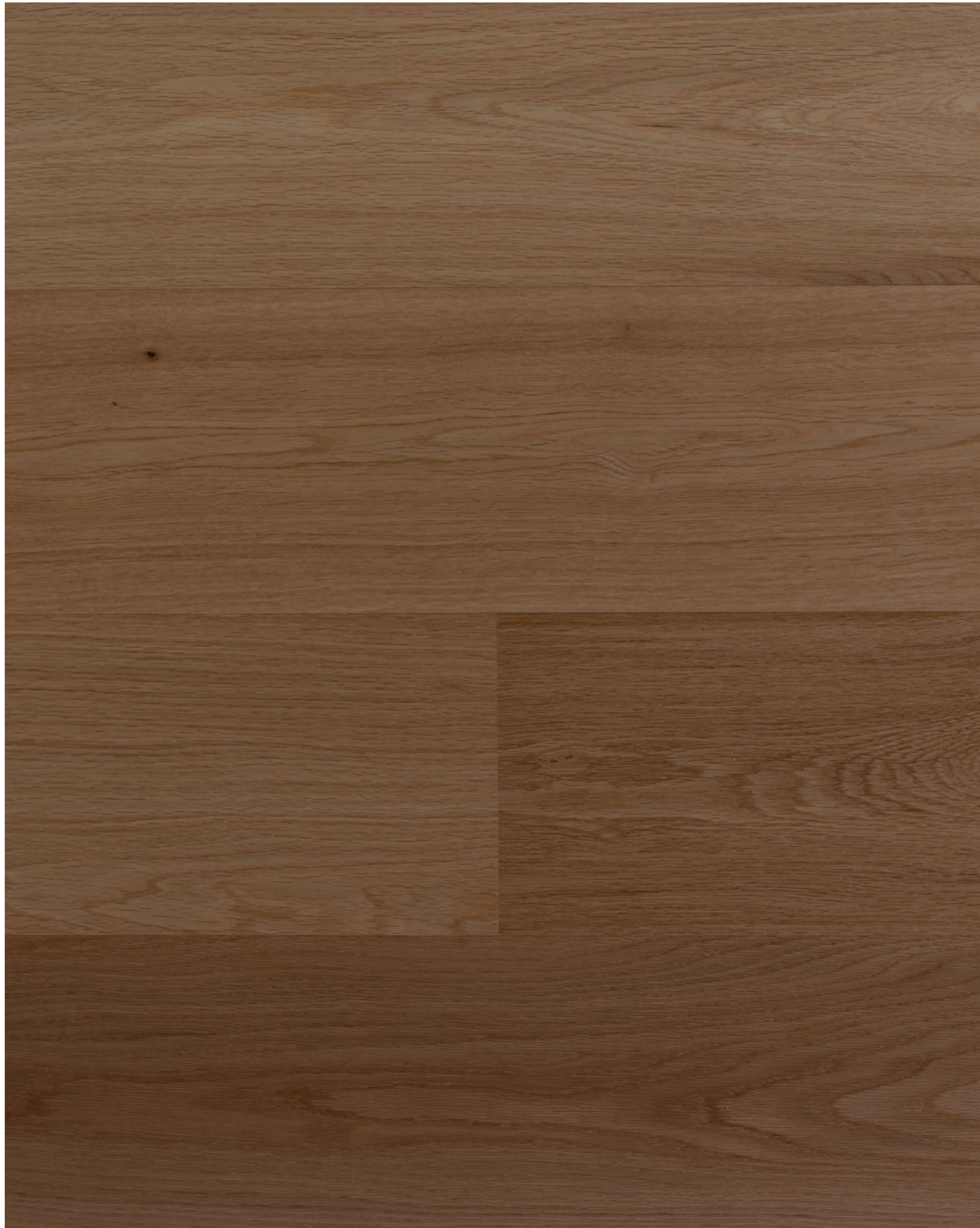


EHF – Natural Collection



EHF – Natural Collection

OAK LACQUERED 190 – IN STOCK



Specifications

| | |
|--------------------|---------------------|
| Pattern: | 1-Strip |
| Top Layer: | 3mm |
| Length: | 1900mm |
| Width: | 190mm |
| Thickness: | 14mm |
| Core: | Poplar |
| Bevel: | N/A (On Order Only) |
| Finish: | Lacquered |
| Commercial Class: | Class 31 |
| Connection System: | Click |
| Installation Type: | Floating |
| FSC Certification: | FSC Certified |

EHF – Natural Collection

OAK BRUSHED NATURAL OILED 190-IN STOCK



Specifications

| | |
|--------------------|-----------------------|
| Pattern: | 1-Strip |
| Top Layer: | 3mm |
| Length: | 1900mm |
| Width: | 190mm |
| Thickness: | 14mm |
| Core: | Poplar |
| Bevel: | N/A (On Order Only) |
| Finish: | Brushed Natural Oiled |
| Commercial Class: | Class 31 |
| Connection System: | Click |
| Installation Type: | Floating |
| FSC Certification: | FSC Certified |

EHF – Natural Collection

OAK BRUSHED WHITE OILED 190-IN STOCK

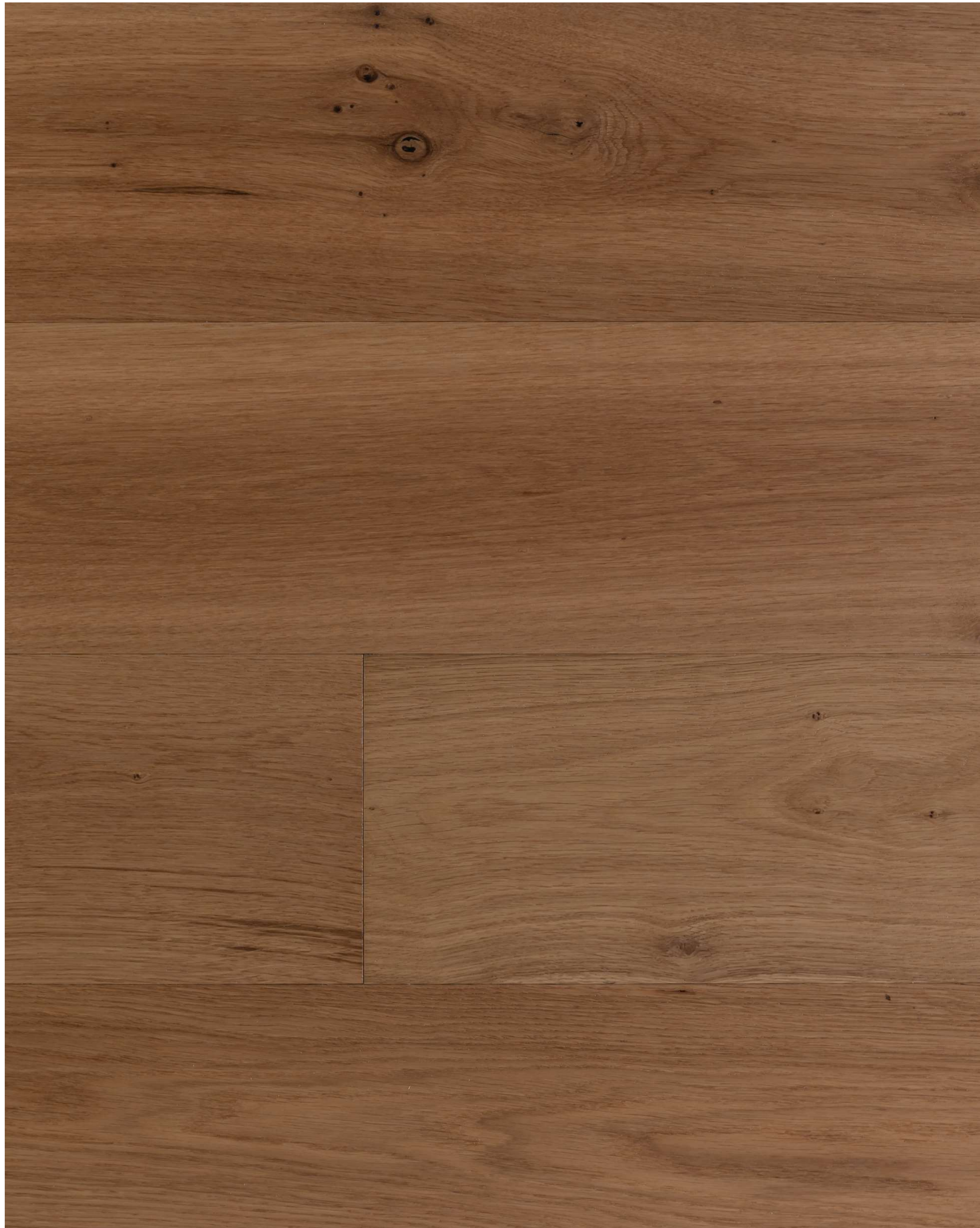


Specifications

| | |
|--------------------|---------------------|
| Pattern: | 1-Strip |
| Top Layer: | 3mm |
| Length: | 1900mm |
| Width: | 190mm |
| Thickness: | 14mm |
| Core: | Poplar |
| Bevel: | N/A (On Order Only) |
| Finish: | Brushed White Oiled |
| Commercial Class: | Class 31 |
| Connection System: | Click |
| Installation Type: | Floating |
| FSC Certification: | FSC Certified |

EHF – Natural Collection

OAK RUSTIC 190 – IN STOCK

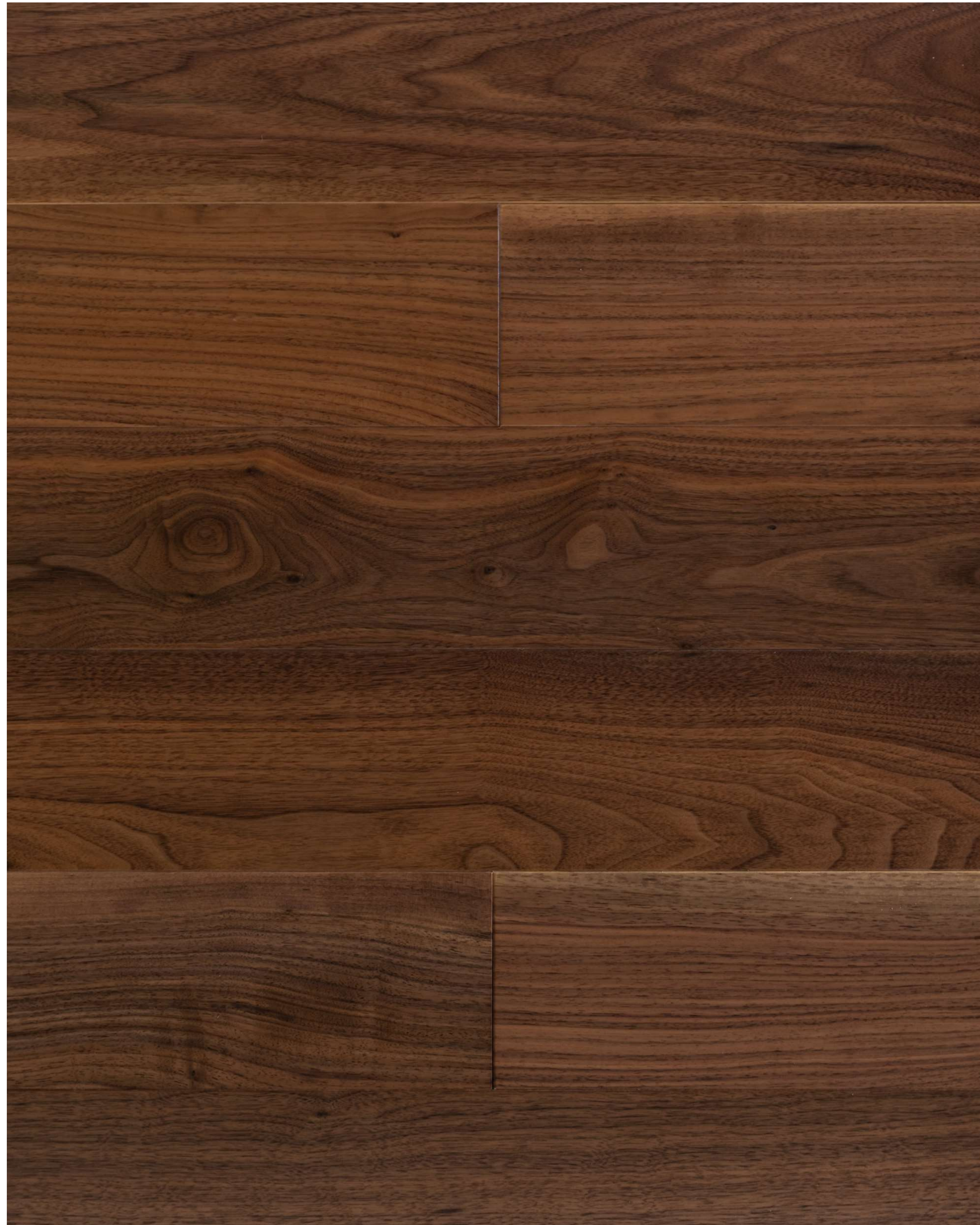


Specifications

| | |
|--------------------|---------------------|
| Pattern: | 1-Strip |
| Top Layer: | 3mm |
| Length: | 1900mm |
| Width: | 190mm |
| Thickness: | 14mm |
| Core: | Poplar |
| Bevel: | N/A (On Order Only) |
| Finish: | Brushed |
| Commercial Class: | Class 31 |
| Connection System: | Click |
| Installation Type: | Floating |
| FSC Certification: | FSC Certified |

EHF – Natural Collection

LIGHT WALNUT 125 – IN STOCK

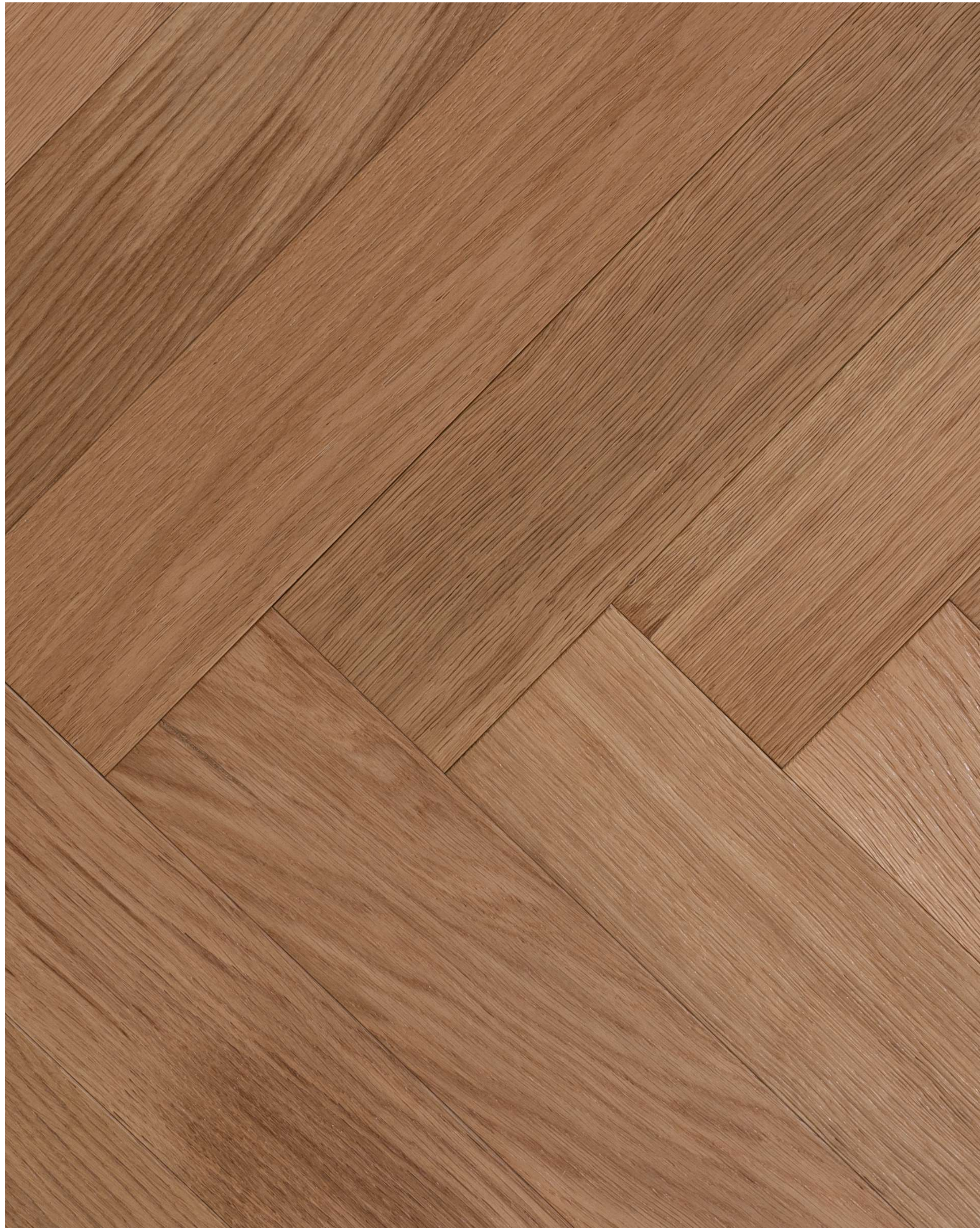


Specifications

| | |
|--------------------|---------------------|
| Pattern: | 1-Strip |
| Top Layer: | 3mm |
| Length: | 600-1200mm |
| Width: | 125mm |
| Thickness: | 14mm |
| Core: | Poplar |
| Bevel: | N/A (On Order Only) |
| Finish: | Brushed |
| Commercial Class: | Class 31 |
| Connection System: | Tongue & Groove |
| Installation Type: | Floating |
| FSC Certification: | FSC Certified |

EHF – Natural Collection

OAK HERRINGBONE – IN STOCK

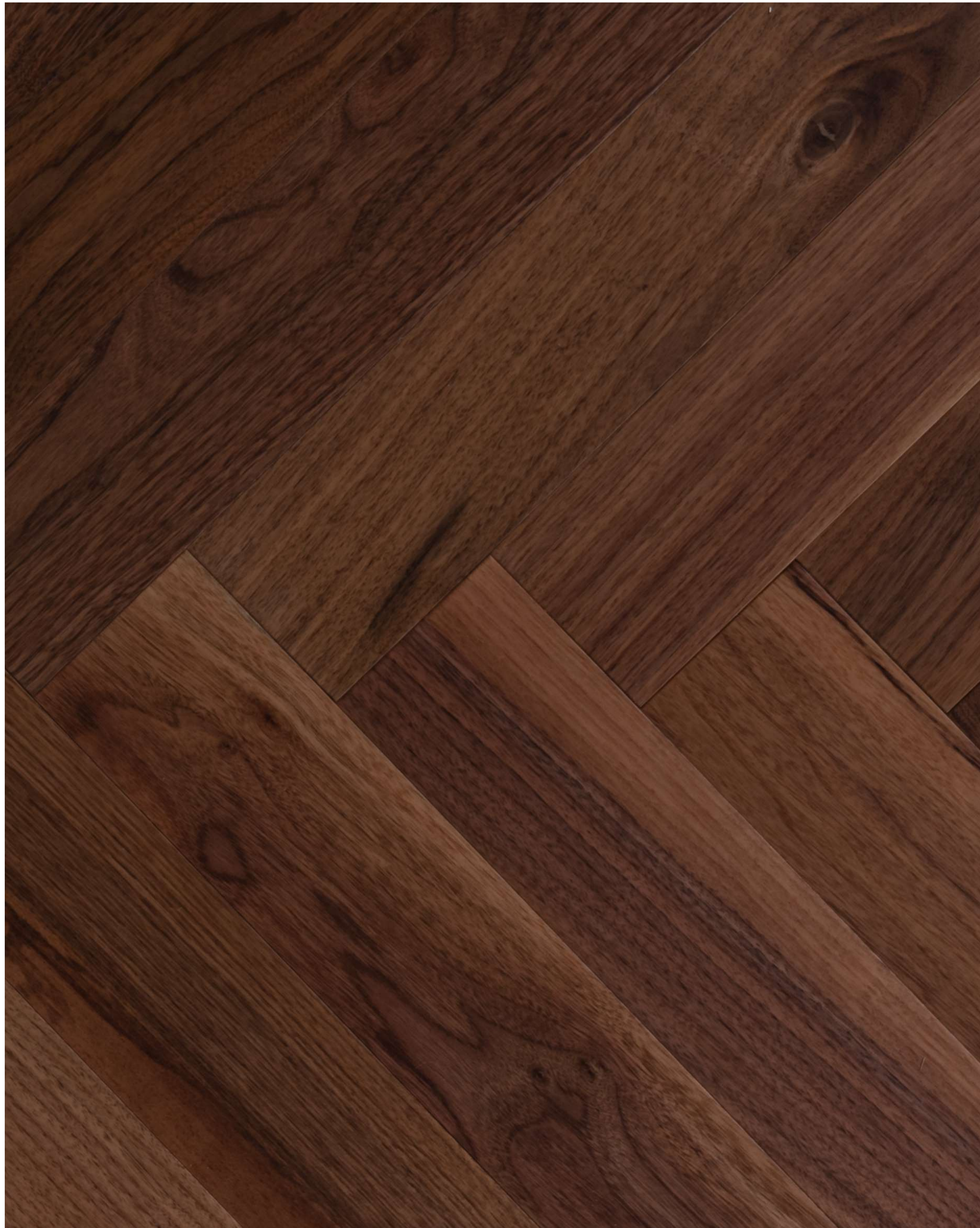


Specifications

| | |
|--------------------|---------------------|
| Pattern: | Herringbone |
| Top Layer: | 3mm |
| Length: | 600mm |
| Width: | 90mm |
| Thickness: | 14mm |
| Core: | Poplar |
| Bevel: | N/A (On Order Only) |
| Finish: | Brushed |
| Commercial Class: | Class 31 |
| Connection System: | Tongue & Groove |
| Installation Type: | Floating |
| FSC Certification: | FSC Certified |

EHF – Natural Collection

WALNUT HERRINGBONE – IN STOCK



Specifications

| | |
|--------------------|---------------------|
| Pattern: | Herringbone |
| Top Layer: | 3mm |
| Length: | 600mm |
| Width: | 90mm |
| Thickness: | 14mm |
| Core: | Poplar |
| Bevel: | N/A (On Order Only) |
| Finish: | Brushed |
| Commercial Class: | Class 31 |
| Connection System: | Tongue & Groove |
| Installation Type: | Floating |
| FSC Certification: | FSC Certified |

EHF – Natural Collection

OAK 3 STRIP 190 – IN STOCK

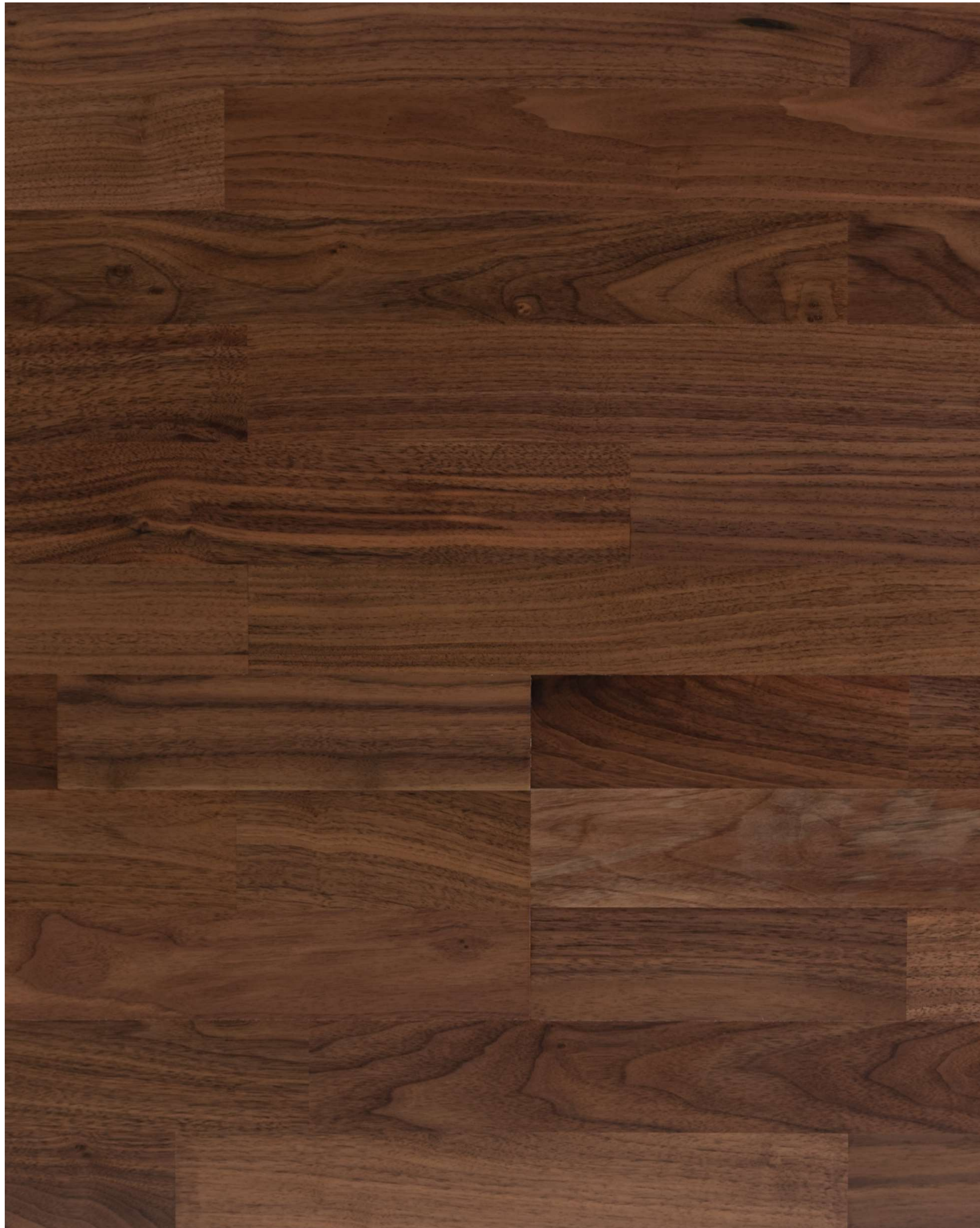


Specifications

| | |
|--------------------|---------------------|
| Pattern: | 3-Strip |
| Top Layer: | 3mm |
| Length: | 1900mm |
| Width: | 190mm |
| Thickness: | 14mm |
| Core: | Poplar |
| Bevel: | N/A (On Order Only) |
| Finish: | Lacquered |
| Commercial Class: | Class 31 |
| Connection System: | Tongue & Groove |
| Installation Type: | Floating |
| FSC Certification: | FSC Certified |

EHF – Natural Collection

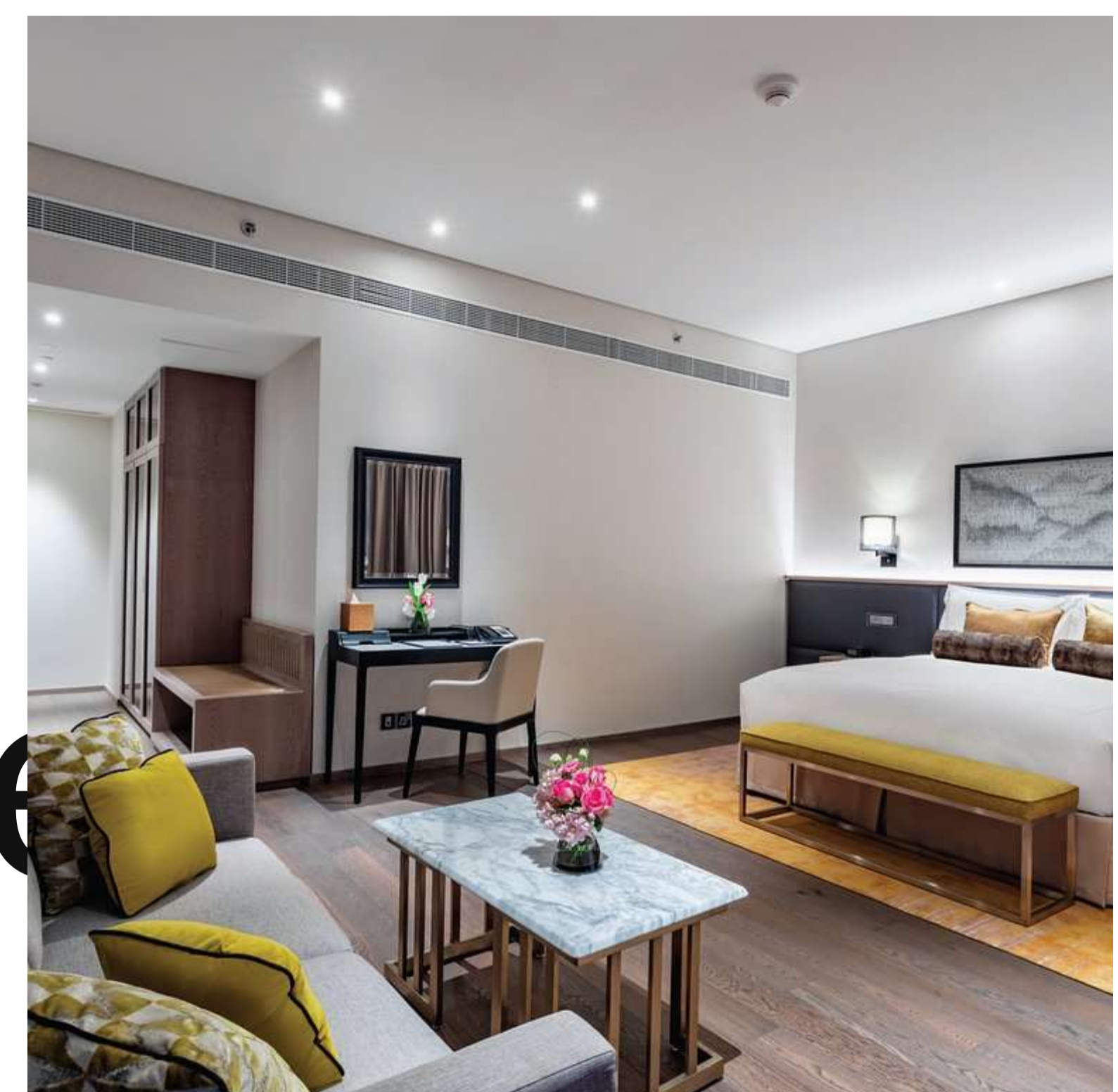
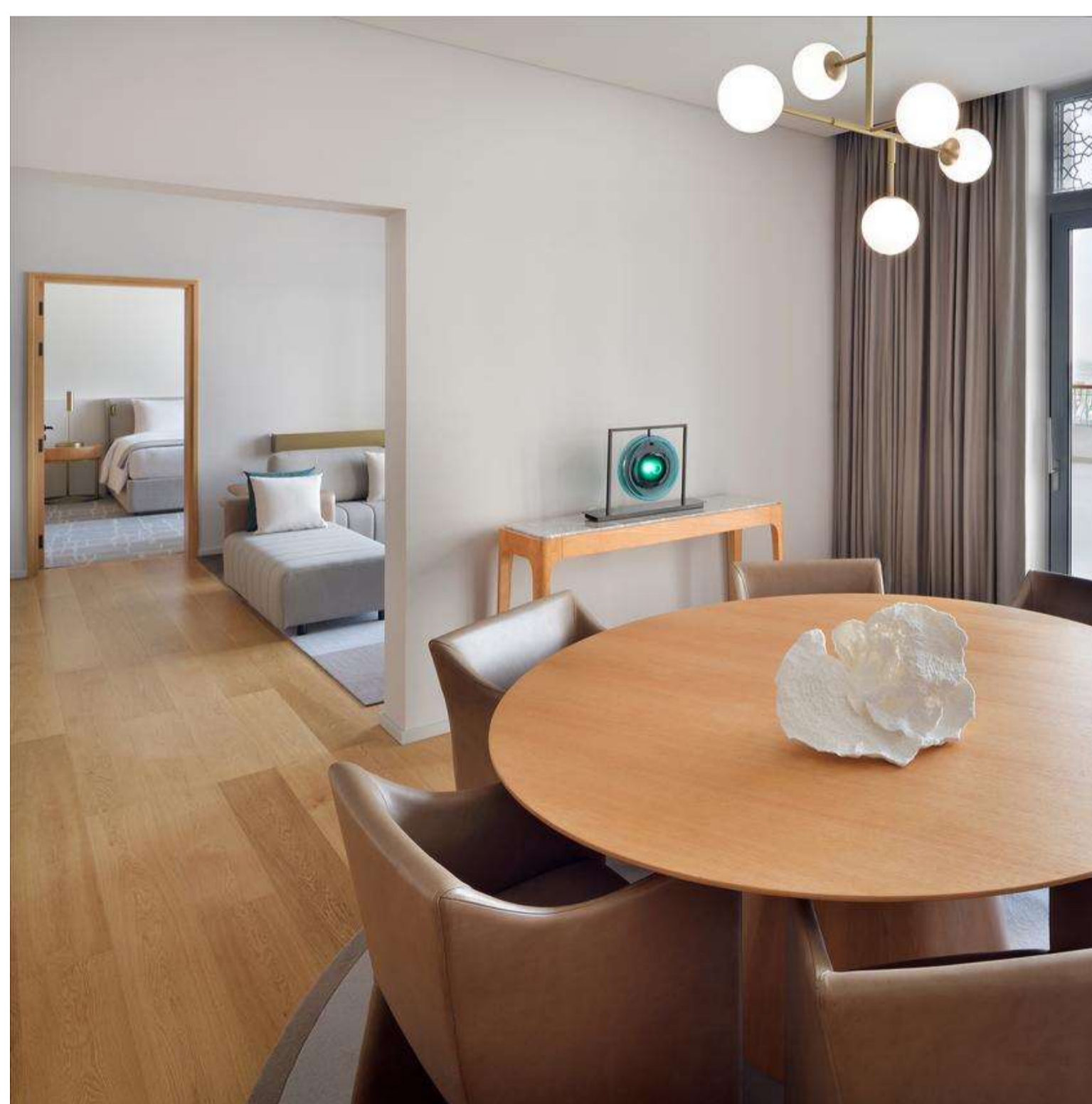
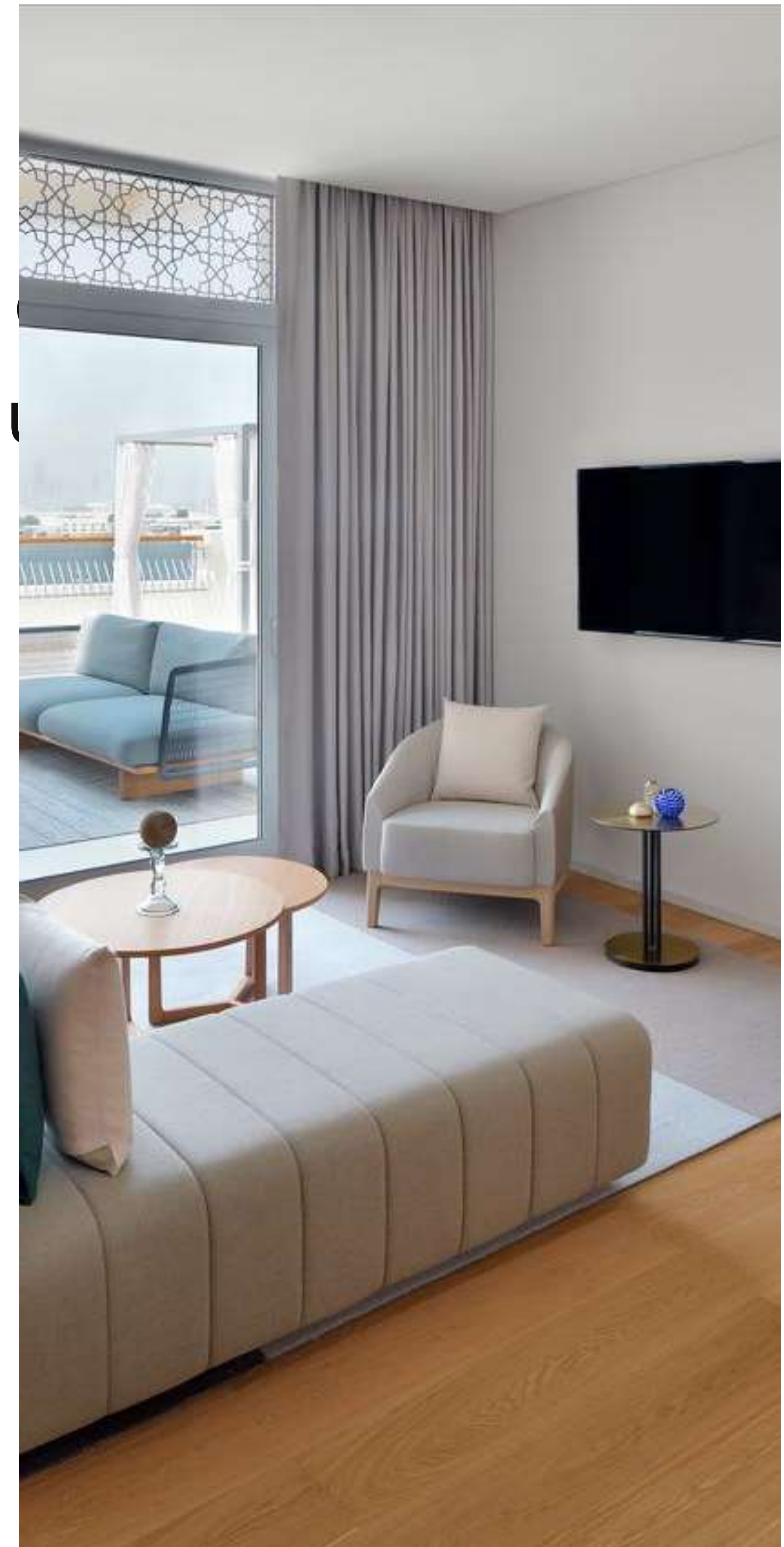
WALNUT 3 STRIP 190 – IN STOCK



Specifications

| | |
|--------------------|---------------------|
| Pattern: | 3-Strip |
| Top Layer: | 3mm |
| Length: | 1900mm |
| Width: | 190mm |
| Thickness: | 14mm |
| Core: | Poplar |
| Bevel: | N/A (On Order Only) |
| Finish: | Lacquered |
| Commercial Class: | Class 31 |
| Connection System: | Tongue & Groove |
| Installation Type: | Floating |
| FSC Certification: | FSC Certified |

BESPOKE COLOURS AVAILABLE
UPON REQUEST.



EHF bespoke colours and finishes are available upon request to suit design requirements for residential, hospitality & commercial schemes.



MODERN, CLASSICAL & STYLISH FLOOR, WALL & WINDOW TREATMENTS.

RF is a wholesale division based in the UAE and Oman with an extensive portfolio of floors, wall coverings and window treatment solutions. Our products can be applied on a broad range of work from small bespoke projects, through to substantial large-scale developments & masterplans.



RF

Renovation Furniture Trading LLC

e: rf@rftgulf.com

w: www.rftgulf.com

t: +91 6678633

a: Injaz Warehouse City, Warehouse 25C, Umm Al Quwain, U.A.E